



Le Balon main satin
glove and belted collar,
both by Maison Glose
4 Buttons Blouse
tee with hearts body suit
with ruffle collar
by Maison Glose



Elza M.

Height 181 - 5' 11" Chest 83 - 32" 1/2 Waist 64 - 25" Hips 91 - 36" Shoe 39 - 7 1/2

GLAMZMODEL



Elza M.

Height 181 - 5' 11" Chest 83 - 32" 1/2 Waist 64 - 25" Hips 91 - 36" Shoe 39 - 7 1/2

GLAMZMODEL



女王登場
從眼妝的配色、修容
到鮮明的脣色，處處精心
的配色與節奏，每次的出現，
讓人眼睛一亮的讚嘆。
黑色外套、耳環、長項鍊
(All by Chanel)

diva slay

進入倒數的派對月份，全身少不了華麗的重裝
穿搭！主題來到以誇張、大型的配件與極具奢華、
濃烈的妝容與髮型，完美詮釋派對精神。

229

Elza M.

Height 181 - 5' 11" Chest 83 - 32" 1/2 Waist 64 - 25" Hips 91 - 36" Shoe 39 - 7 1/2

GLAMZMODEL



Heerd met *Jaws*-print
 (ook te zien van
 lunch), bodysuit, rok
 en pumps met rubber
 bumpers *Calvin Klein*
 2005/2006 V. C. Sier
bucket bag *Staud* via
 de Bijenkorf, vergalde
 messing voorhellen met
 initiale voorcluster
Lele Sadoughi via
 myheressa.com,
 verselde armband en
 ringen met gekleurd
 kristal *Dries Van
 Noten* *Appelluur*
 boven, popart benee,
Jaws versus pumps
 met popartprint en
blansen in between.

89

Elza M.

Height 181 - 5' 11" Chest 83 - 32" 1/2 Waist 64 - 25" Hips 91 - 36" Shoe 39 - 7 1/2

GLAMZMODEL



Leren A-lijnjurk, wollen trui, poplin blouse, halsband met leren strik, salijnen haarband met strik *Prada*, messing oorbellen met truitatoparels en kristal *Miu Miu* via mytheresa.com. Een titanenstrijd: meisjesachtige-strikken in de clinch met rebels diepzwart leer. Wie wint? Of wordt het gelijkspel?



Elza M.

Height 181 - 5' 11" Chest 83 - 32" 1/2 Waist 64 - 25" Hips 91 - 36" Shoe 39 - 7 1/2

GLAMZMODEL



Elza M.

Height 181 - 5' 11" Chest 83 - 32" 1/2 Waist 64 - 25" Hips 91 - 36" Shoe 39 - 7 1/2

GLAMZMODEL



Elza M.

Height 181 - 5' 11" Chest 83 - 32" 1/2 Waist 64 - 25" Hips 91 - 36" Shoe 39 - 7 1/2

GLAMZMODEL



Bodysuit, brassiere and skirt, all Burberry



Dress and catsuit, both Dolce & Gabbana; boots, Celine by Hedi Slimane

Elza M.

Height 181 - 5' 11" Chest 83 - 32" 1/2 Waist 64 - 25" Hips 91 - 36" Shoe 39 - 7 1/2

GLAMZMODEL



Abito in pelle
con finitura
semilucida
e scollo a
camicia
(Ted's).
Sneakers
Falcon
(adidas
Originals).



Abito
monospalla
in pelle con
drappaggi e orlo
asimmetrico
(Gucci).
Sneakers in
velluto con
traccia-decoro
(Superga).

Elza M.

Height 181 - 5' 11" Chest 83 - 32" 1/2 Waist 64 - 25" Hips 91 - 36" Shoe 39 - 7 1/2

GLAMZMODEL



Elza M.

Height 181 - 5' 11" Chest 83 - 32" 1/2 Waist 64 - 25" Hips 91 - 36" Shoe 39 - 7 1/2

GLAMZMODEL



Elza M.

Height 181 - 5' 11" Chest 83 - 32" 1/2 Waist 64 - 25" Hips 91 - 36" Shoe 39 - 7 1/2

GLAMZMODEL



Elza M.

Height 181 - 5' 11" Chest 83 - 32" 1/2 Waist 64 - 25" Hips 91 - 36" Shoe 39 - 7 1/2

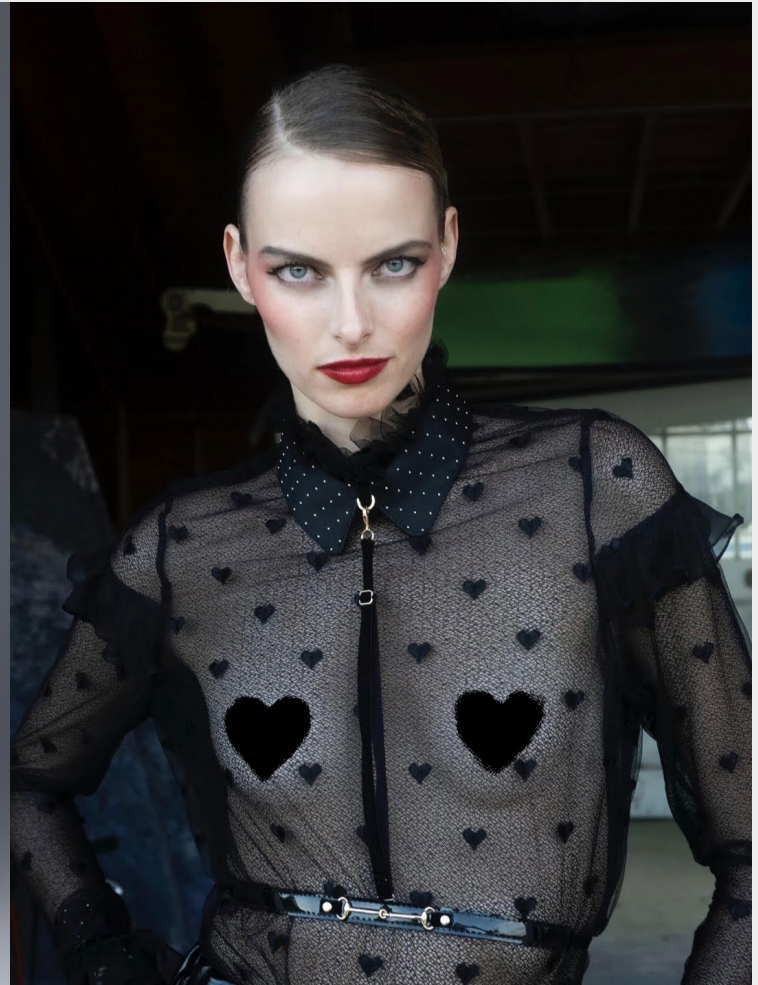
GLAMZMODEL



Elza M.

Height 181 - 5' 11" Chest 83 - 32" 1/2 Waist 64 - 25" Hips 91 - 36" Shoe 39 - 7 1/2

GLAMZMODEL



Elza M.

Height 181 - 5' 11" Chest 83 - 32" 1/2 Waist 64 - 25" Hips 91 - 36" Shoe 39 - 7 1/2

GLAMZMODEL



Elza M.

Height 181 - 5' 11" Chest 83 - 32" 1/2 Waist 64 - 25" Hips 91 - 36" Shoe 39 - 7 1/2

GLAMZMODEL



Elza M.

Height 181 - 5' 11" Chest 83 - 32" 1/2 Waist 64 - 25" Hips 91 - 36" Shoe 39 - 7 1/2

GLAMZMODEL



Elza M.

Height 181 - 5' 11" Chest 83 - 32" 1/2 Waist 64 - 25" Hips 91 - 36" Shoe 39 - 7 1/2

GLAMZMODEL



Elza M.

Height 181 - 5' 11" Chest 83 - 32" 1/2 Waist 64 - 25" Hips 91 - 36" Shoe 39 - 7 1/2

GLAMZMODEL



Elza M.

Height 181 - 5' 11" Chest 83 - 32" 1/2 Waist 64 - 25" Hips 91 - 36" Shoe 39 - 7 1/2

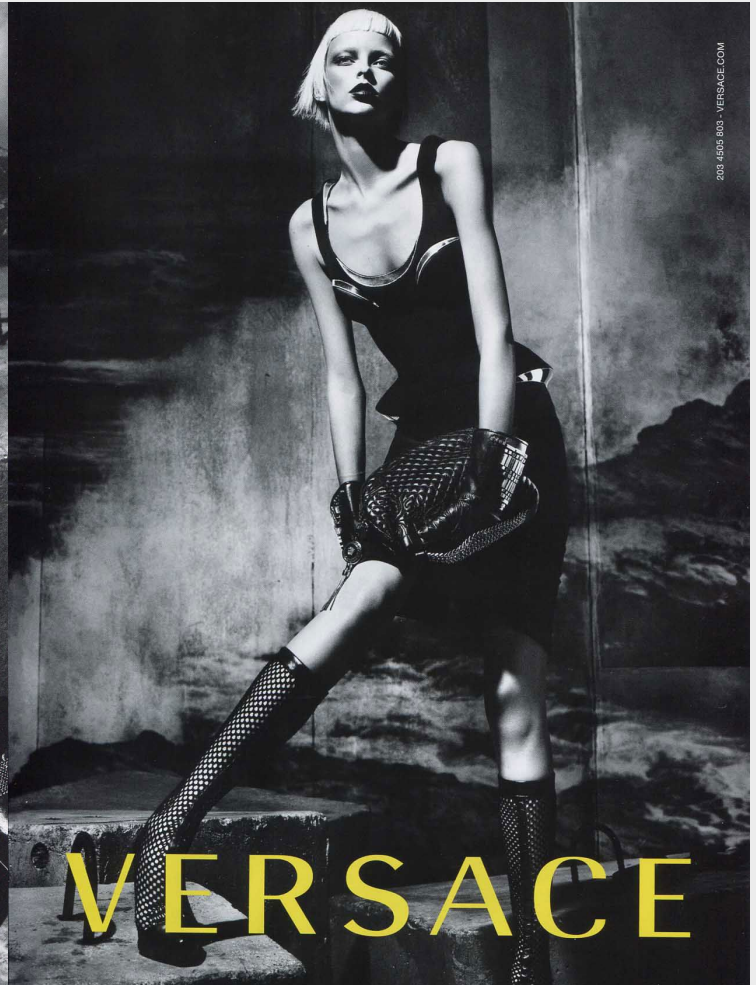
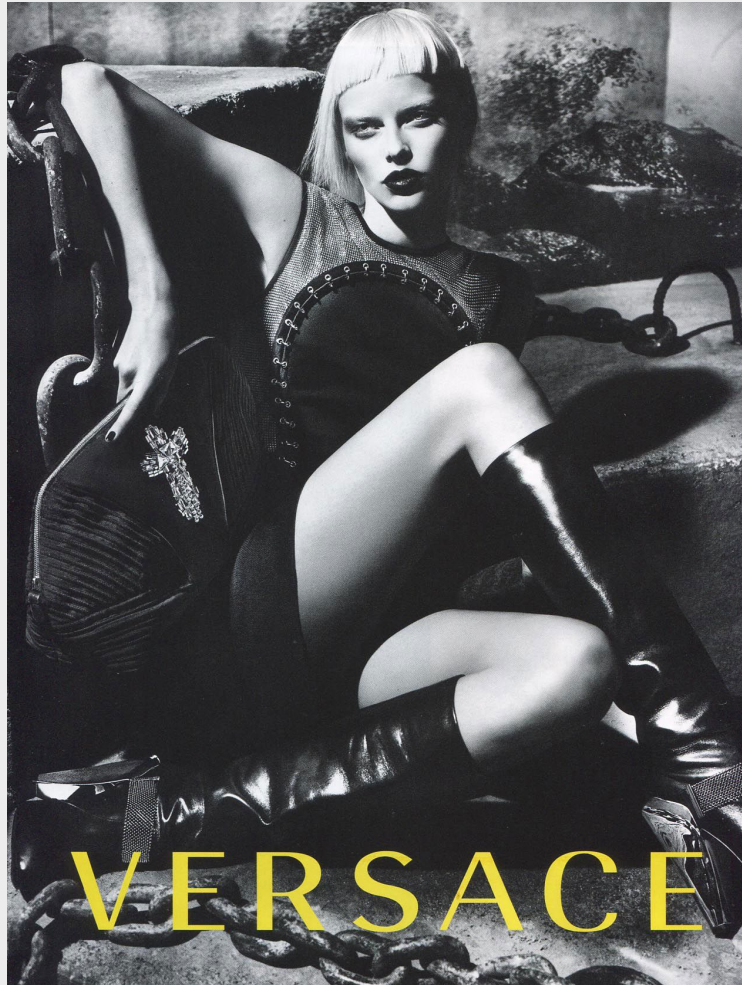
GLAMZMODEL



Elza M.

Height 181 - 5' 11" Chest 83 - 32" 1/2 Waist 64 - 25" Hips 91 - 36" Shoe 39 - 7 1/2

GLAMZMODEL



Elza M.

Height 181 - 5' 11" Chest 83 - 32" 1/2 Waist 64 - 25" Hips 91 - 36" Shoe 39 - 7 1/2

GLAMZMODEL

white leather dress
 Anna Sola Madam
 leg sleeves
 Anna Sola Madam
 black dress
 Anna Sola Madam
 dark blue tweed dress
 Temperley London
 belt and bag
 Bottega Veneta
 shoucker
 Bottega Veneta
 leather shoes
 Prada



PHOTOGRAPHY
 Daniela Glina
 FASHION
 Sayari Bloom
 HAIR
 Kamila Fortini @ Eighteen Management
 MAKEUP
 Adam Garland @ Eighteen Management
 POSING
 Elza Luijendijk @ IMG Models

N10N15

roll neck
 22 by Jacob
 bomber jacket
 22 by Jacob
 bomber backpack
 22 by Jacob
 waist belt & socks
 Bottega Veneta
 leather
 Bottega Veneta
 mesh tights
 Christian Dior
 trousers
 Anna Sola Madam
 shoes
 Prada



N10N14

Elza M.

Height 181 - 5' 11" Chest 83 - 32" 1/2 Waist 64 - 25" Hips 91 - 36" Shoe 39 - 7 1/2

GLAMZMODEL



Elza M.

Height 181 - 5' 11" Chest 83 - 32" 1/2 Waist 64 - 25" Hips 91 - 36" Shoe 39 - 7 1/2

GLAMZMODEL



Elza M.

Height 181 - 5' 11" Chest 83 - 32" 1/2 Waist 64 - 25" Hips 91 - 36" Shoe 39 - 7 1/2

GLAMZMODEL



Elza M.

Height 181 - 5' 11" Chest 83 - 32" 1/2 Waist 64 - 25" Hips 91 - 36" Shoe 39 - 7 1/2

GLAMZMODEL